

Rapid-Roll® MC Elite Cards

Draw the right card!

When quality really counts, Avery Dennison® Rapid-Roll® MC Elite Cards give you excellent printability, high stiffness and crease-resistance - and a smooth feel for a wide range of consumer-facing applications. These materials also perform over time, allowing long-term visual impact for retail tags.

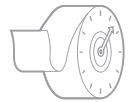
High stiffness ensures optimal performance during printing, finishing and end use.

KEY FEATURES

- > High natural whiteness
- > High tear strength when perforated
- > Very high folding crack resistance
- > UV light stability and ageing resistance
- > Odour neutral
- > Low fibre dust when die cutting
- > Easy converting, folding, cutting and perforating
- > Easy ink setting for all print techniques
- > Vibrant colours
- > Compatibility with thermal transfer and traditional printing
- > One- or two-sided coated products available

RECOMMENDED USES

- > Retail and product information tags
- > Neck labels for bottles
- > Premium packaging using folding boxes
- > Greeting and business cards



PRODUCT CHARACTERISTICS

Avery Dennison Rapid-Roll® MC Elite Cards are produced on a special paper machine, capable of layering many different layers of pulp with varying fibre compositions - for high print quality and maximum flexibility with inks. These materials use high quality wood-free pulp in the middle layer. The quality of the fibres determines the printing quality, the cost, and other characteristics such as stiffness and ageing resistance. Rapid-Roll® MC Elite Cards have a very smooth surface, and are available in low and medium gloss versions. Please ask also for our special papers: uncoated, satin, matt and other variations.

PRINT RECOMMENDATIONS

MC Elite Cards 2S (two-sided) coated materials:
Process printing (4+ colours) on both sides in all traditional printing technologies: UV offset, UV flexo, and letterpress.

MC Elite Cards 1S (one-sided) coated materials:
Process printing on the front side and spot, text or line copy, using 1-2 colour printing on the back side. When printing information or images, final print quality depends on the printing press, process parameters, ink used and card properties. Some of our materials can be digitally printed without additional treatment.

Code	Description	Basis weight g/m ²	Caliper	Gloss	Service
BC987	MC ELITE CARD 1S-180 FSC	180g	215µ	Low	2M FTO
AZ859	MC ELITE CARD 1S-190 FSC	190g	200µ	Low	EXACT
BC644	MC ELITE CARD 1S-200 FSC	200g	235µ	Low	EXACT
BC976	MC ELITE CARD 2S-200 FSC	200g	195µ	Low	2M FTO
AY521	MC ELITE CARD 2S-220 FSC	220g	230µ	Low	EXACT
AY520	MC ELITE CARD 2S-240 FSC	240g	260µ	Low	EXACT
BH837	MC ELITE CARD 2S-260 FSC	260g	290µ	Low	1M FTO
BC368	MC ELITE 2S-300 FSC	300g	235µ	Medium	2M FTO
BE195	MC BOARD 1S-180 FSC	180g	255µ	Low	2M FTO

SERVICE

All materials are available in minimum order quantities starting from 1000m², shipped within 2 business days after placing an order.

If you have any questions, please contact your sales representative or send an email to rapidroll@averydennison.com

Visit our website to find out more
about the Rapid-Roll® portfolio.
label.averydennison.eu/rapidroll



DISCLAIMER - All Avery Dennison statements, technical information and recommendations are based on tests believed to be reliable but do not constitute a guarantee or warranty. All Avery Dennison products are sold with the understanding that purchaser has independently determined the suitability of such products for its purposes. All Avery Dennison's products are sold subject to Avery Dennison's general terms and conditions of sale, see <http://terms.europe.averydennison.com>

©2017 Avery Dennison Corporation. All rights reserved. Avery Dennison and all other Avery Dennison brands, this publication, its content, product names and codes are owned by Avery Dennison Corporation. All other brands and product names are trademarks of their respective owners. This publication must not be used, copied or reproduced in whole or in part for any purposes other than marketing by Avery Dennison.